









--	--	--	--	--





1.1 .....1

1.2 .....4

2.1 .....9

2.2 .....9

2.3 .....9

2.4 .....10

2.5 .....10

3.1 .....11

3.2 .....11

3.3 .....12

3.4 .....14

3.5 .....15

4.1 .....18

4.2 .....18

4.3 .....18

4.4 .....20

---

4.5	.....	20
4.6	.....	20
4.7	.....	21
4.8	.....	22
5.1	.....	23
5.2	.....	26
5.3	.....	31
5.4	.....	32
6.1	.....	33
6.2	.....	33



---

1

2

3

1

2



2016 7

2016-2020

2016-2020

2021 2

GB50433-2018

DB6101/T3094-2020

2021 11

2021 11 11

2021 12

2021

12 9

2021 35

108 52'39.46" 34 22'35.06"



10980m<sup>2</sup>                      5                      43415m<sup>2</sup>                      32435m<sup>2</sup>  
 4#                      5#                      1720m<sup>2</sup>                      1# 2# 3#

1#		7207	23.7	5	1338	7202	
2#		10722	23.7	5	2337	10722	
3#		7207	23.7	5	1338	7240	
4#		2641	21.6	5	522	2641	
5#		4521	21.6	5	1138	4521	

		137		1	137	137	
	+	+	10980		-1		
			43415			6537	32435

0.75hm<sup>2</sup>

0.22hm<sup>2</sup>

0.06hm<sup>2</sup>

0.47hm<sup>2</sup>

4m

4m

220mm

300mm

543.00m

0.22hm<sup>2</sup>

0.06hm<sup>2</sup>

11

7

0.04hm<sup>2</sup>

0.05hm<sup>2</sup>

0.47hm<sup>2</sup>

0.47hm<sup>2</sup>

0.23hm<sup>2</sup>

13.96%

0.21hm<sup>2</sup>

8000                      32000                      19000  
1000                      4000                      6000  
IPO

1.1-2

1			
2			
3			
4			
5			
6			
7			

2022 2

2024 1

24

2021 2

GB50433-2018  
2020

2021 12

DB6101/T3094-  
2021 12 9  
[2021]35

1.84hm<sup>2</sup>

1.2-1

	0.65		0.65	
	0.75		0.75	
	0.23		0.23	
	0.21		0.21	
	0.06		0.06	
	1.84	0	1.84	

1

GB/T50434-2018

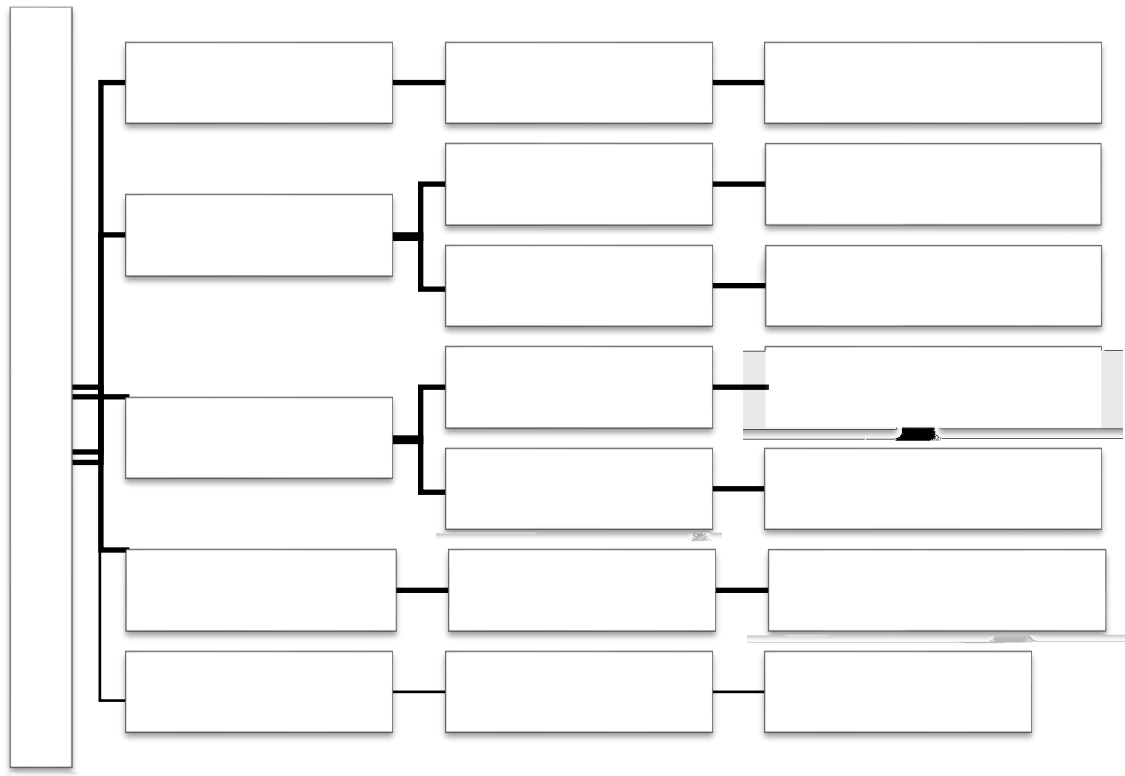
99.38%

---

1.00	99%	97%	13.96%
100%	31.29%	68.0%	99%
	32.45%	0.54	

2

1.2-1



1.2-3




16

1 1991 2010  
12 2011 3 1  
2 2013 7 26  
2013 10 1 2024 5  
3 2007 10 28  
2008 1 1

1  
[2003]89  
2 28 2006 11 9  
2007 2 1  
3 29 2006  
11 9 2007 2 1

4 [2017]365  
5 [2018]133  
6 [2016]65  
7 [2018]25  
8 “ ”  
2019 160

1  
2013 188

2 < >

2012 512 2012 11 15

3

2004 97

4 2015 58

2015 247

5 “ ”

2019 160

1 GB50433-2018

2 T/GB50434-2018

3 SL-336

4 SL190-2007

5 GB/T16453.1 16453.6-2008

6 GB/T15774-2008

7 SL/T523-2024

1

2021 11

2 2021 35 2021

12 9

3

2021 2

1

2

3

4

5

HSE

3.2-1

“

”

1

2

3

4

SL336-2006

5

95%	1.00	99%	95%
13.96%	100%	30%	68.00%
30%	99%	0.55	
		99.38%	
1.00	99%	97%	13.96%
100%	31.29%	68.0%	99%
32.45%	0.54		

1

2



3.5-1

---

1		
2		
3		
4	/ /	
5		
6		
7		
8		
9		
10		
11		
12		
13		
14		
15		
16		
17		
18		
19		

1		
2		
3		

1.84hm<sup>2</sup>

1.84hm<sup>2</sup>

—

2021 2

2022 2

1

2

3

4

5

6

1

2

3

4

5

1

2

“ ”

1

2

3

4

1

2

3

2022 2 “  
” “ ” “ ”

1

2

3

4

5





					716m 100m	8
3		1		1	1hm <sup>2</sup> 0.23hm <sup>2</sup> 1hm <sup>2</sup> 1	1
4		1		1	2 1	3
				1	100m 50m	2
				1	16350m <sup>2</sup> 1000m <sup>2</sup>	18
5		1		1	0.07hm <sup>2</sup> 1000m <sup>2</sup> 1000m <sup>2</sup> 1	1
				1	0.07hm <sup>2</sup> 1000m <sup>2</sup> 1000m <sup>2</sup> 1	1
		5		13		53

SL336-

2006

53

30

13

2024 7

13

100%

5

2024 7

5

100%

1

716m

0.09 m<sup>3</sup>

5196m<sup>2</sup>

2

0.09 m<sup>3</sup>

0.07 m<sup>3</sup>

0.23hm<sup>2</sup>

3

0.06hm<sup>2</sup>

410.5

## 5.2-1

1		m	716	716	0
2		m <sup>3</sup>	0.09	0.09	0
3		m <sup>2</sup>	5196	5196	0
1		hm <sup>2</sup>	0.23	0.07	-0.16
2		m <sup>3</sup>	0.09	0.09	0
3		hm <sup>2</sup>	0.23	0.23	0
1		hm <sup>2</sup>	0	0.06	+0.06

1

6600m<sup>2</sup>

2

2

1

7420m<sup>2</sup>

3

2330m<sup>2</sup>

4

583.0m<sup>3</sup>

100m

400m<sup>2</sup>

5

583.0m<sup>3</sup>

33.68

## 5.2-2

1		m <sup>2</sup>	6600	6600	0
1			2	2	0
2			1	1	0
3		m <sup>2</sup>	7420	7420	0
1		m <sup>2</sup>	2330	2330	0
1		m <sup>2</sup>	420	0	-420
2		hm <sup>2</sup>	0.04	0	-0.04
3		m	111	0	-111
4		m	50	0	-50
5			1	0	-1
1		m <sup>3</sup>	583	583	0
2		m	0	100	+100
3		hm <sup>2</sup>	0	0.04	+0.04
1		m <sup>3</sup>	583	583	0

255.62

123.13

41.31

17.86

65.55

3.65

8.00

26.40

19.50

8.00

4.65

2017 75

1.7 /m<sup>2</sup>18358m<sup>2</sup>

31208.60

31208.60

255.62

123.14

41.31

17.85

65.55

3.65

8.00

26.40

19.50

8.00

4.65

31208.60

5.2-3

1		0	0	0
2		110.79	110.79	0
3		12.34	12.34	0
4		0	0.01	+0.01
				0
1		41.31	41.31	0
1		2.05	2.05	0
2		6.20	6.20	0
3		0.72	0.72	0
4		1.62	7.26	
5		5.65	0	
6		1.62	1.62	0

1		3.65	3.65	0
2		8	8	0
3		19.50	19.50	0
4		26.40	26.40	0
5		8.00	8.00	0
				0
				0

10.22

0.01

0.01

10.22

1

0.01

2

0.01

4.94 m<sup>3</sup>

4

10.22

“

”

2022 2

2024 1

5.3-1

5.3-2

1		m	716	716	0	2022.2-2022.4
2		m <sup>3</sup>	0.09	0.09	0	2022.2-2022.3
3		m <sup>2</sup>	5196	5196	0	2023.4-2023.6
1		hm <sup>2</sup>	0.23	0.07	-0.16	2023.3
2		m <sup>3</sup>	0.09	0.09	0	2023.2
3		hm <sup>2</sup>	0.23	0.23	0	2023.4-2024.1
1		hm <sup>2</sup>	0.06	0	+0.06	2023.12

1		m <sup>2</sup>	6600	6600	0	2022.2-2023.1
1			2	2	0	2022.2-2022.3
2			1	1	0	2022.2-2022.3



---

3		m <sup>2</sup>	7420	7420	0	2022.2-2022.3
1		m <sup>2</sup>	2330	2330	0	2023.2-2023.7
1		m	0	100	+100	2022.2-2022.3
2		m <sup>2</sup>	0	400	+400	2022.2-2022.5
3		m <sup>3</sup>	583	583	0	2022.2-2023.12
1		m <sup>3</sup>	583	583	0	2022.2-2024.1

“

”

1

2

---

1 2022 2

2 2022 6

3 2022 9

4 2023 2

5 2023 4

6 2023 5 30

2023 19

7 2023 12

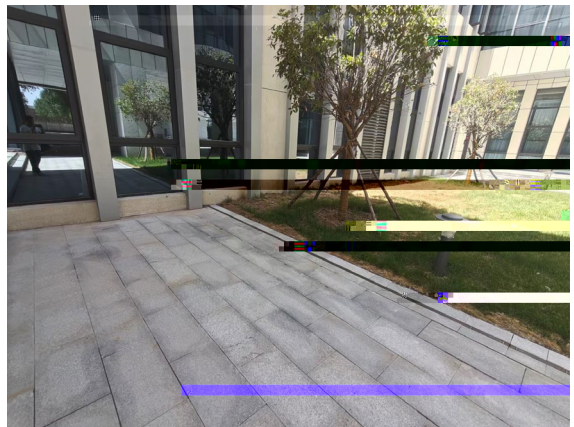
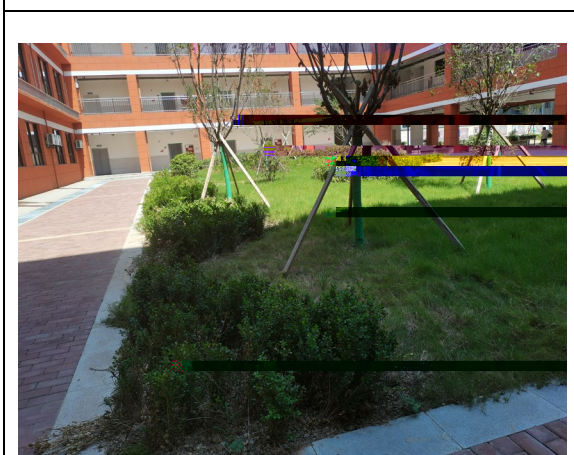
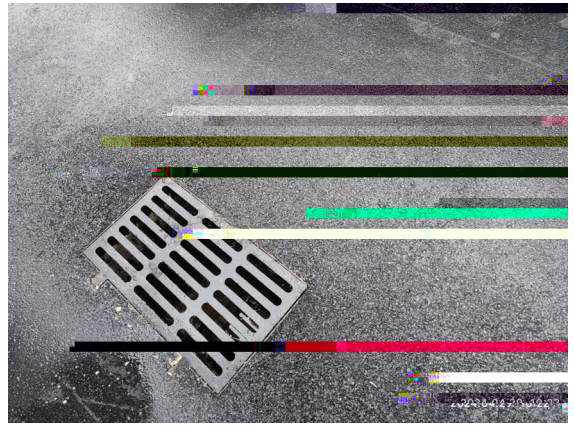
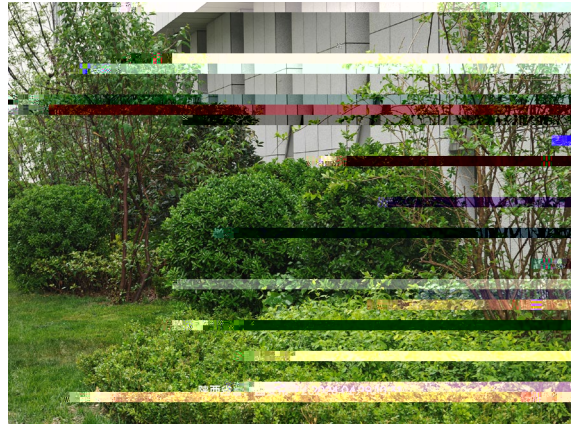
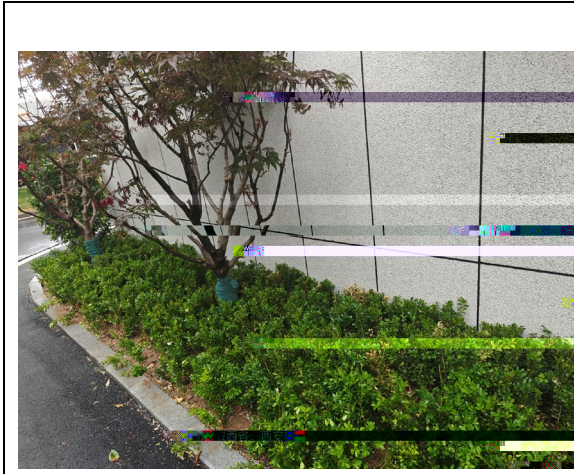
8 2024 1

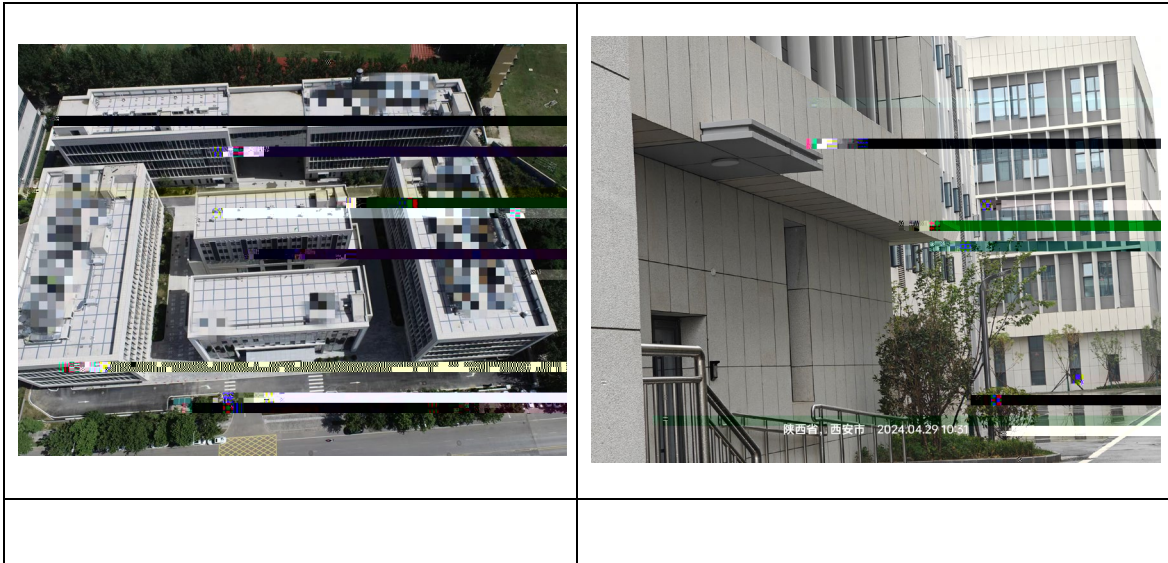
9 2024 7 22

“

”

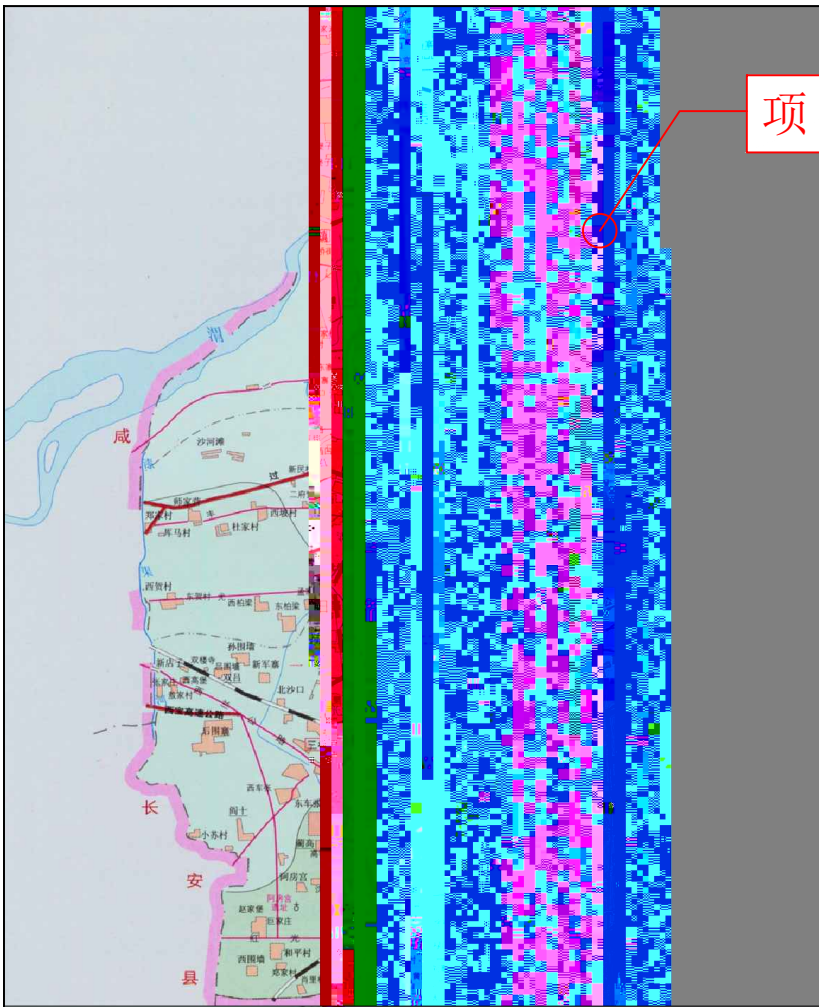
10 2024 10



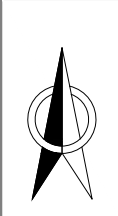








项目区



项目区



附图1 项目地理位置图

